

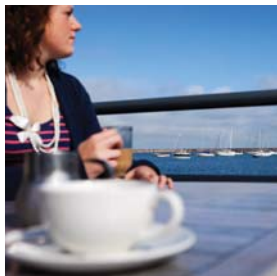
Hubs

We have 'hubs' located all around Holy Island from where you can pick up or drop off your hired bikes.



See map for locations.

- 1 **Breakwater Country Park**
Caffi Môn, Old Warden's House, Breakwater Country Park, Holyhead. LL65 1YG. Phone: 01407 761317
Opening Times: 9-5, 7 days a week
- 2 **Holyhead Station**
Left Luggage Facility, Platform 2, Holyhead Railway Station, Port of Holyhead, LL65 1DJ. Phone: 07794 680118
Opening Times: 9-5, 7 Days a week, all year round
- 3 **Blackthorn Farm**
Penrhosfeiliw, Trearddur Bay, LL65 2LT
Phone: 01407 765262, Mobile: 07760 460077
Opening Times: 9-5, 7 days a week, all year round
- 4 **Anglesey Outdoors**
Porthdafarch Rd, Holyhead, LL65 2LP
Phone: 01407 769351
opening Times: 9.30am - 5pm, 7 days
- 5 **Anglesea Marine and Leisure**
The Boat Yard, Lôn Isallt, Trearddur Bay, LL65 2UN.
Mobile: 07837718739
Opening Times: 9am-8pm, 7 days a week March – Sept
- 6 **Outdoor Alternative**
Cerrig yr Adar, Rhoscolyn, Holyhead, Anglesey, LL65 2NQ.
Phone: 01407 860469
Opening Times: 9-5, 7 days a week, all year round



Book Now

Hiring your bikes couldn't be easier. Just give us a call or visit our website to book instantly.

Call: 07717 453806

Email: info@cybibikes.co.uk

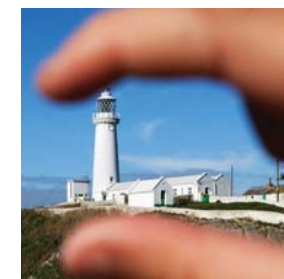
Visit: www.cybikes.co.uk



You can also find us on
Facebook & Twitter



Breakwater Country Park



About Cybi Bikes

Cybi Bikes is a brand new Cycle hire company based on Holy Island, Anglesey. We have hubs located at key tourist locations on the island offering cycle hire facilities, catering for everyone's needs.

Bikes can be hired to explore Holy Island and beyond at your own leisure, but to help you travel along the safest routes we have developed four way marked Green Links Cycle Routes on Holy Island. Look out for the Green Links logo on the blue cycle route signs.

We also offer a free breakdown service to all of our customers, so you won't need to worry about anything! Just sit back, relax and pedal!



Porthdafarch Beach

Discover Holy Island

Whether you love to walk or cycle, or just take in the air outdoors, very few locations can rival Holy Island. Found at the North West tip of Anglesey, the island boasts some of the UK's most spectacular coastal walks – a place where the natural landscape, wildlife and historic landmarks meet head on.



Happy Cycling

If you get a puncture or a breakdown on any part of your journey, then just give us a call and we'll be with you as soon as we can. If the problem can be fixed quickly then we'll fix it, if not we'll just provide you with a replacement bike and get you back on your way as soon as possible.

A Cybi Bike is more than just a bike – it's peace of mind.

"My family and I became lost and had to call for assistance, we were collected within 10mins and taken back to our campsite by the Cybi Bikes support vehicle, excellent service at no extra charge."

Mr Millar, Leeds

Our Bikes

We have a range of adult and children's hybrid bikes that are great to ride and very safe. We also have tag-alongs & child seats so all the family can join in the experience!

We think they're the best bikes you can hire and we're very proud of them!

Before all bikes are hired out they are thoroughly checked. We keep detailed records of all servicing and ensure that all our bikes are in perfect condition.

Each customer is provided with a helmet, hi-viz vest, and bike lock.

Prices

Men's & Ladies Bike Hire

Full Day	£15
Half Day	£10
Additional Days	£10 per day

Child Bikes (5-12 years)

Full Day	£10
Half Day	£7
Additional Days	£7 per day

Family Bundle (2 Adult Bikes & 2 Child's Bikes)

Full Day	£45
Half Day	£30
Additional Days	£30 per day

Electric Bikes

Full day	£20
Half Day	£15
Additional Days	£15 per day

Additional Equipment

Tag along	£5 per day
Child Seat	£5 per day



South Stack

Holyhead Mountain

Breakwater Country Park

Newry Beach Promenade

HOLYHEAD



Penrhos Beach

Penrhos Coastal Park

VALLEY

TREARDDUR BAY

RHOSCOLYN

Rhoscolyn Beach

Silver Bay

Cycle Routes



- Porth Dafarch Loop - 9.8 miles**
A leisurely cycle along the beautiful north end of Holy Island.
1 hour - 9.8 miles (15.8km)
- Trearddur Loop - 12 miles**
Take in the stunning views of little alcoves along the coast road to Trearddur bay.
1 hour 30 minutes - 12 miles (19.3km)
- Four Mile Bridge Loop - 16 miles**
This route passes over Four Mile Bridge and takes you onto the mainland of Anglesey.
2 hours - 16 miles (26km)
- Rhoscolyn Loop - 20.2 miles**
Extend your cycle to the glorious area of Rhoscolyn and its beach, hidden among the winding roads.
2 hours 30 minutes - 20.2 miles (32.5km)

Trearddur and Four Mile Bridge loops are both extensions of the Porth Dafarch Loop. Rhoscolyn Loop is an extension of the Four Mile Bridge Loop

Key

- | | |
|-------------------|-----------------|
| Cybi Bikes Hub | Standing Stones |
| South Stack | Burial Chamber |
| Holyhead Mountain | Forest |
| Restaurant | Kayak Hot Spot |
| Shop | Golf Course |
| Duck Pond | RSPB Centre |
| Camp Site | RAF Valley |
| Hospital | Ferry Terminal |
| Train Station | Toilets |
| Marina | |